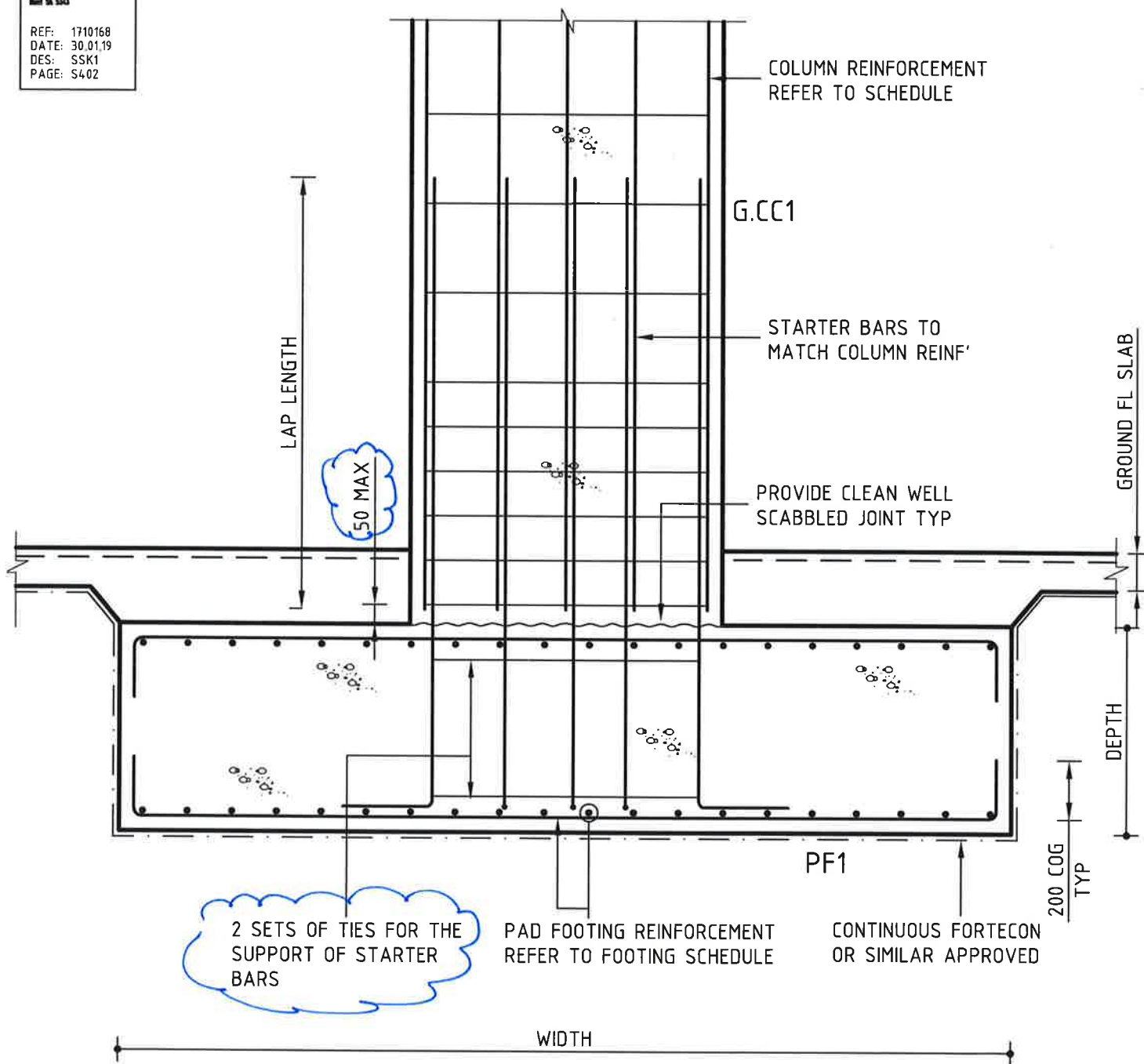




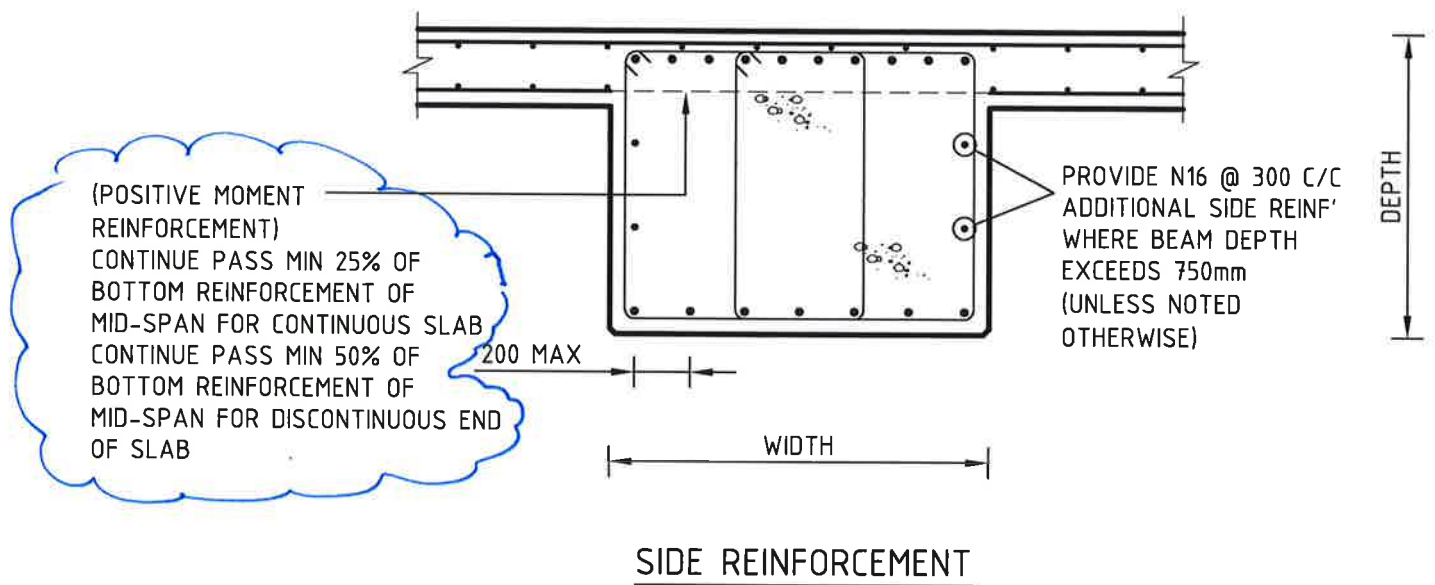
Civil - Structural
 Environmental - Geotechnical
 Mechanical - Electrical
 Fire - Hydraulics
 Lifts - Green ESD
 Level 4, 100 Pitt Street
 Adelaide SA 5000
 Telephone 08 8230 4330
 Facsimile 08 8230 1403
 Email Office 25 Vaughan Terrace,
 West SA 5043

REF: 1710168
 DATE: 30.01.19
 DES: SSK1
 PAGE: S402



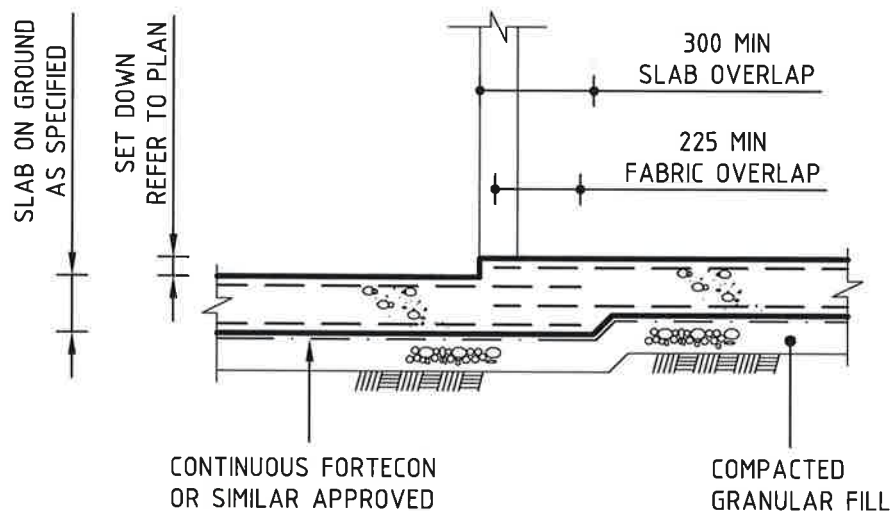
TYPICAL CONCRETE COLUMN TO PAD FOOTING DETAIL

1:20



TYPICAL CONCRETE BEAM DETAILS

NTS



TYPICAL WET AREA SLAB SET DOWN DETAIL

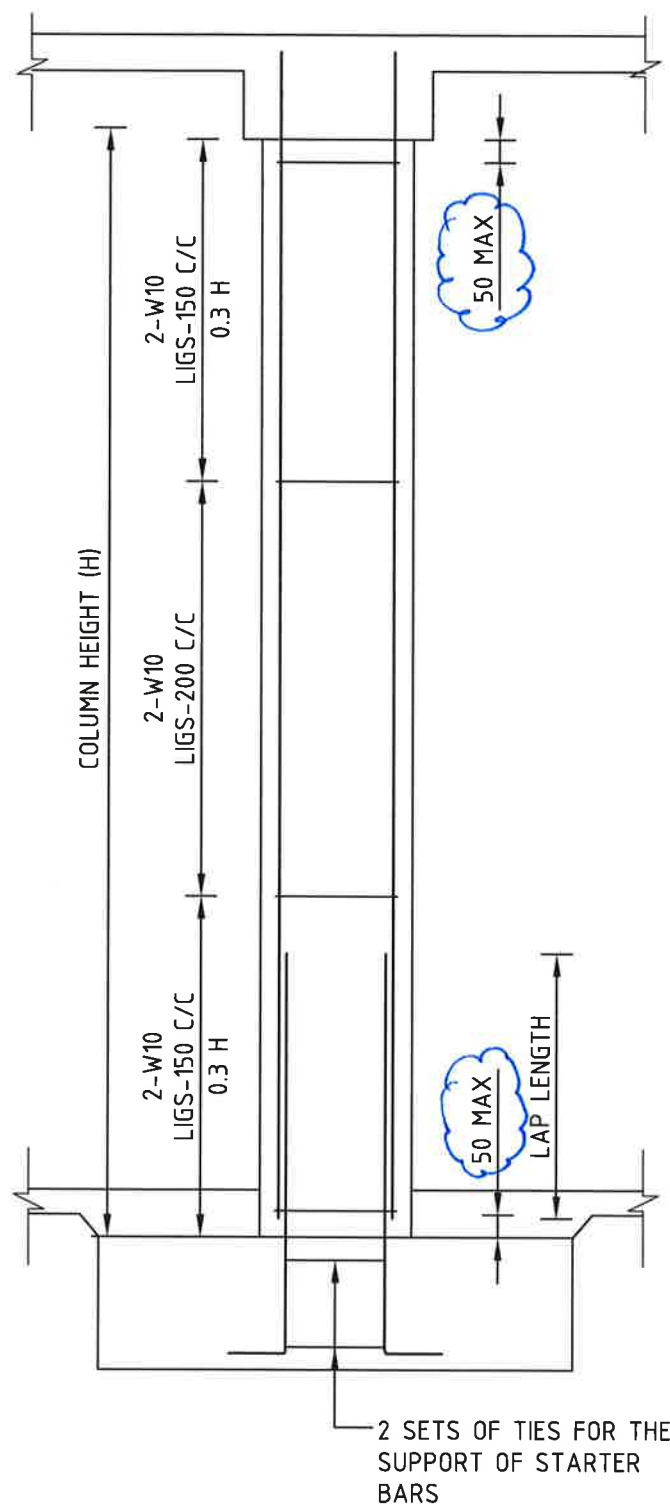
1:20



Civil - Structural
Environmental - Geotechnical
Mechanical - Electrical
Fire - Hydraulics
Life - Green ESD

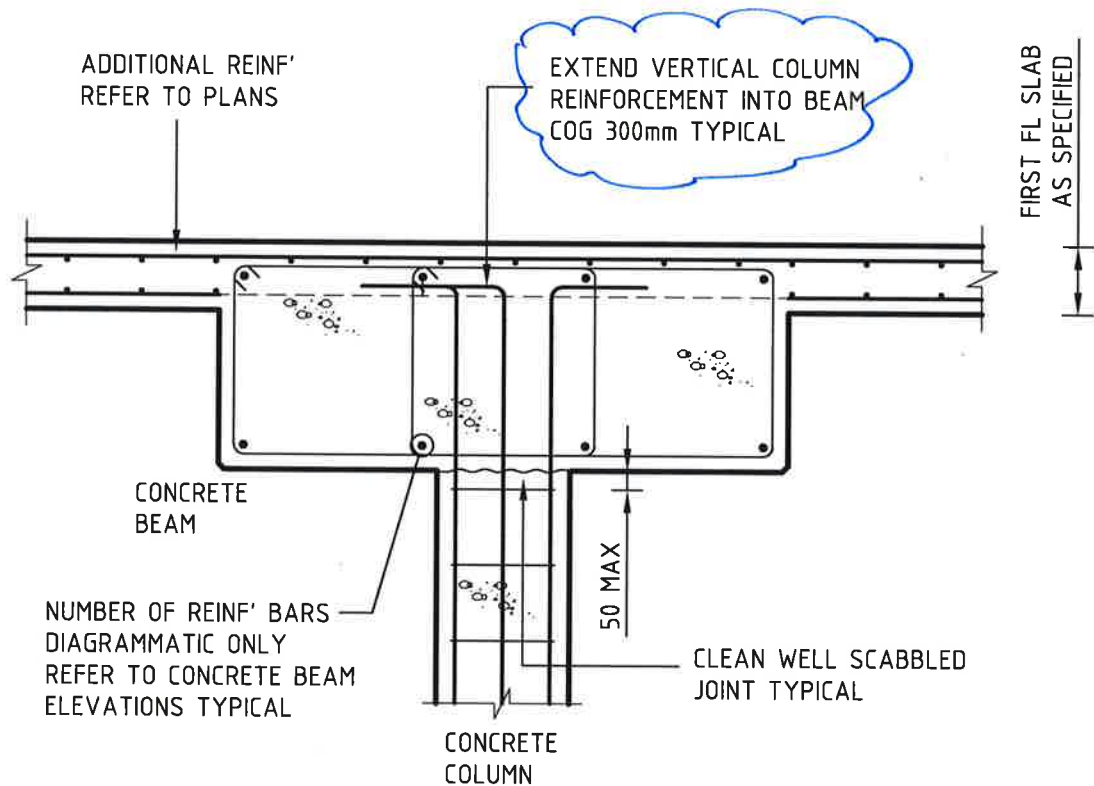
Level 4, 180 Pitt Street
Adelaide SA 5000
Telephone 08 8235 4499
Facsimile 08 8210 4400
Email info@tak-engineering.com.au
Web www.tak-engineering.com.au

REF: 1710168
DATE: 30.01.19
DES: SSK4
PAGE: S402



CONCRETE COLUMN LIGITURE SPACING (UNO)

NTS



TYPICAL CONCRETE COLUMN / BEAM CONNECTION

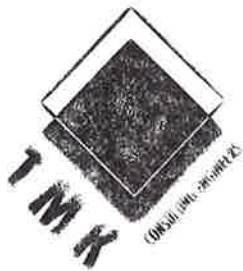
NTS

Ref: 1710168

Date: 30.01.09

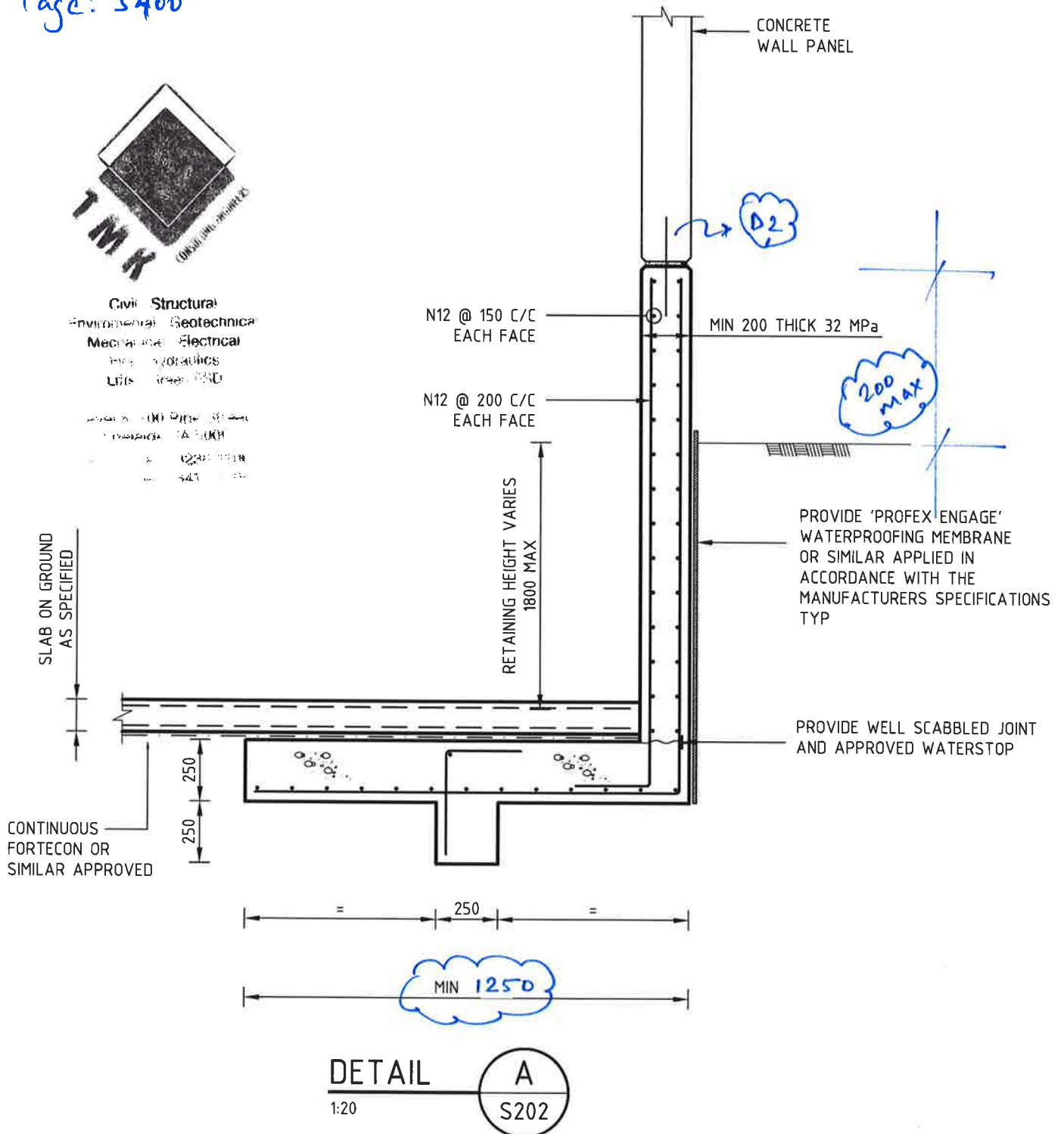
Des: SSK 6

Page: 5400



Civil Structural
Environmental Geotechnical
Mechanical Electrical
Hydro-Mechanics
Lifts Pumps DSD

Services: (1) Water Supply
Sanitation & Storm
Drainage (2) Sewerage
(3) Gas (4) Oil



TYPICAL RETAINING WALL RW1 DETAIL